

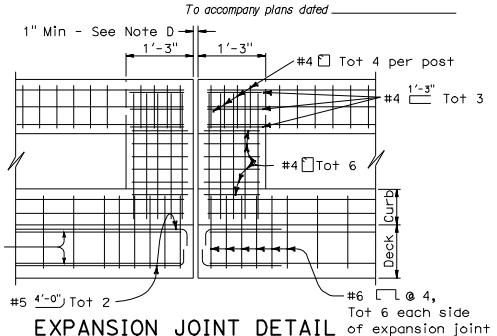
DIST	COUNTY	ROUTE	POST MILES TOTAL PROJECT	SHEET NO.	TOTAL SHEETS

REGISTERED CIVIL ENGINEER

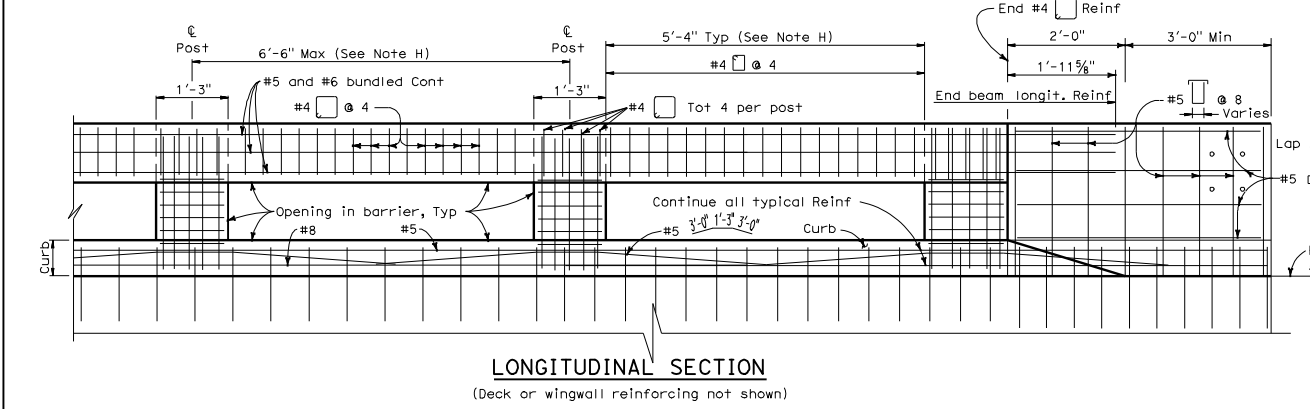
January 18, 2008
PLANS APPROVAL DATE

Tillett Satter
No. C42892
Exp. 03-31-08
CIVIL
STATE OF CALIFORNIA

The State of California or its officers or agents shall not be responsible for the accuracy or completeness of electronic copies of this plan sheet.



- NOTES:**
- A. Walls are to be backfilled before the barrier is placed.
 - B. Longitudinal reinforcing steel to stop at all expansion joints.
 - C. The front face dimensions are to be constant above the finish roadway profile, but the overall height will vary with certain thicknesses of surfacing and roadway slopes.
 - D. Expansion joint to match deck joint.
 - E. No lap splicing allowed on the longitudinal rail reinforcing. Splicing shall be staggered.
 - F. For typical metal railing connection details not shown, see Standard Plans A77J1 and A77J2.
 - G. Chain link railing is not allowed on Type 80 Barriers.
 - H. Post to be spaced equally, typically 6'-6" spacing. Post spacing may be reduced where location of hinges or expansion joints or the length of wingwalls will not accommodate the 6'-6" spacing. Maximum see-through availability is to be strived for, where 6'-6" post spacing can not be achieved.



STATE OF CALIFORNIA
DEPARTMENT OF TRANSPORTATION

**CONCRETE BARRIER
TYPE 80
(SHEET 1 OF 2)
NO SCALE**

RSP B11-60 DATED JANUARY 18, 2008 SUPERSEDES STANDARD PLAN B11-60
DATED MAY 1, 2006 - PAGE 276 OF THE STANDARD PLANS BOOK DATED MAY 2006.

REVISED STANDARD PLAN RSP B11-60